

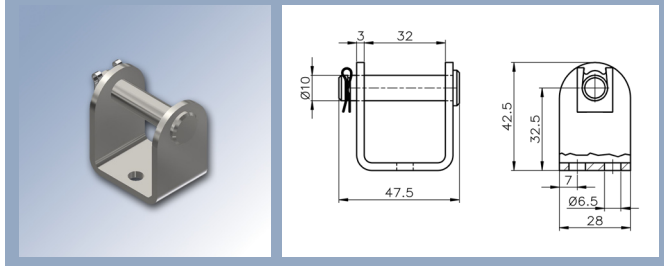
Brackets

Bansbach
easylift

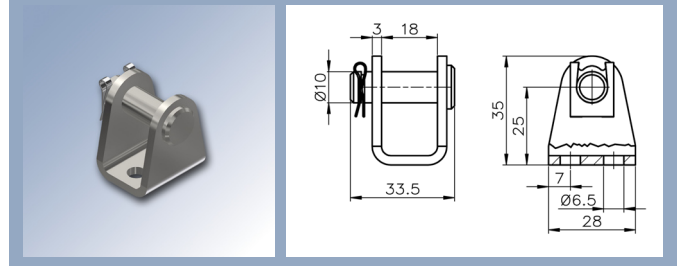
For the fixation of the easyE-line actuators we offer the following brackets:

easyE-35

EEL900BA35-1MS (Motor-Side)
Maximum load: 2200N, material: steel, zinc plated

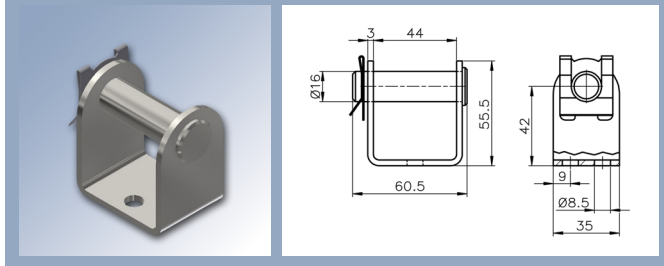


EEL900BA35-1KS (Piston rod-Side)
Maximum load: 2200N, material: steel, zinc plated

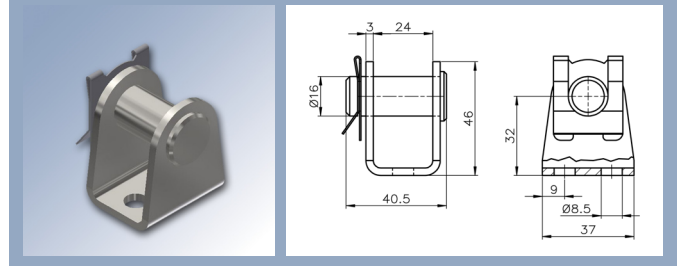


easyE-50

EEL900BA50-1MS (Motor-Side)
Maximum load: 4500N, material: steel, zinc plated

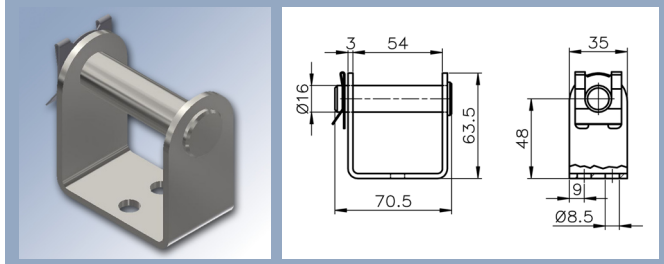


EEL900BA50-1KS (Piston rod-Side)
Maximum load: 4500N, material: steel, zinc plated

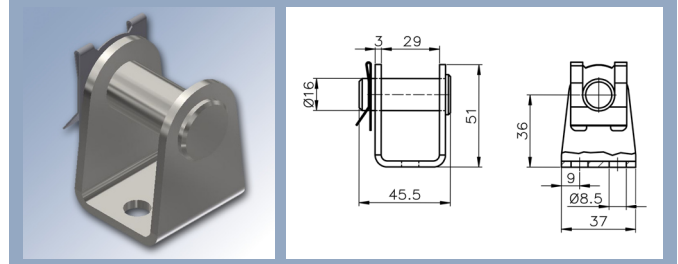


easyE-60

EEL900BA60-1MS (Motor-Side)
Maximum load: 5000N, material: steel, zinc plated



EEL900BA60-1KS (Piston rod-Side)
Maximum load: 5000N, material: steel, zinc plated



The flyer is subject to technical alterations and printing mistakes.

Bansbach easylift GmbH

Barbarossastraße 8
D-73547 Lorch

Tel. +49 (0) 7172/9107-0
Fax +49 (0) 7172/9107-44

info@bansbach.de
www.bansbach.de

Bansbach
easylift

03/2019