

MULTI-DPM

FEATURES

- ✓ Thin-film technique replaces the ceramic-cell
- ✓ Suitable for dynamic pressure measurements
- ✓ New design
- ✓ Min./Max.-value memory



MULTI-DPM

FEATURES

- ✓ Bar graph display
- ✓ Measuring range 60, 250, 600 bar
- ✓ High overload protection
- ✓ Selectable: bar, psi, MPa



MULTI-DPM

TECHNICAL DATA

Display:

7-segment-LCD-display, 12.7 mm, 9999 counts

Measuring accuracy:

± 0.5% of end value, ± 1 digit

Measuring ranges:

0 - 60 bar / 250 bar / 600 bar

Overload limit:

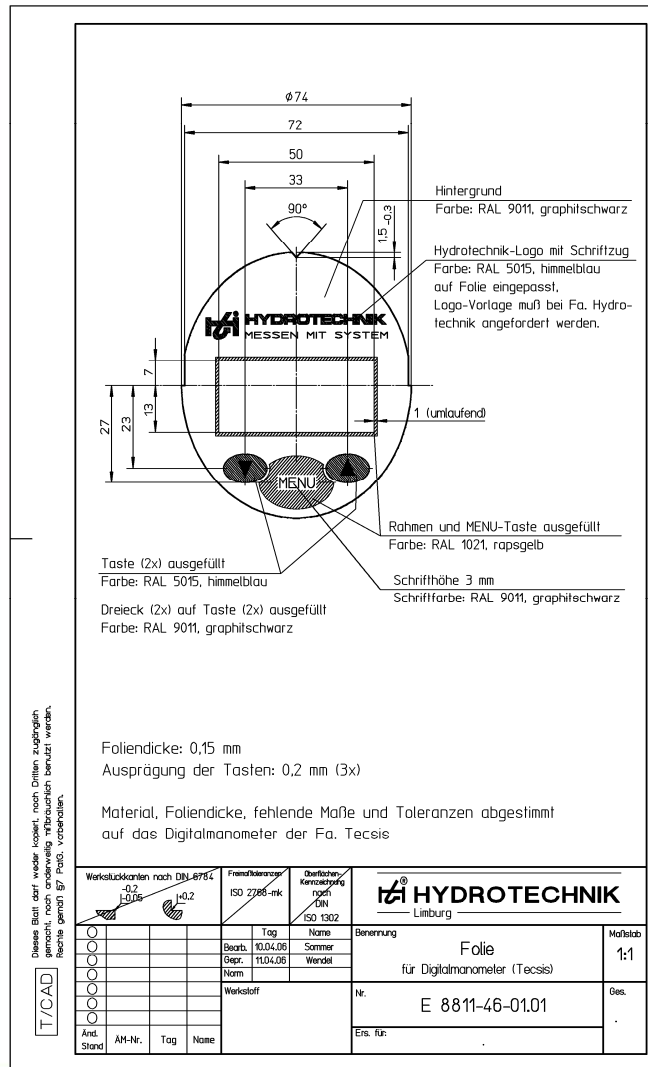
2-times, max. 1.000 bar

Pressure connection:

ISO 228 - G 1/4

Weight:

approx. 0,4 kg



MULTI-DPM

TECHNICAL DATA

Parts in contact with medium:
Stainless Steel 1.4571, sealing made of NBR

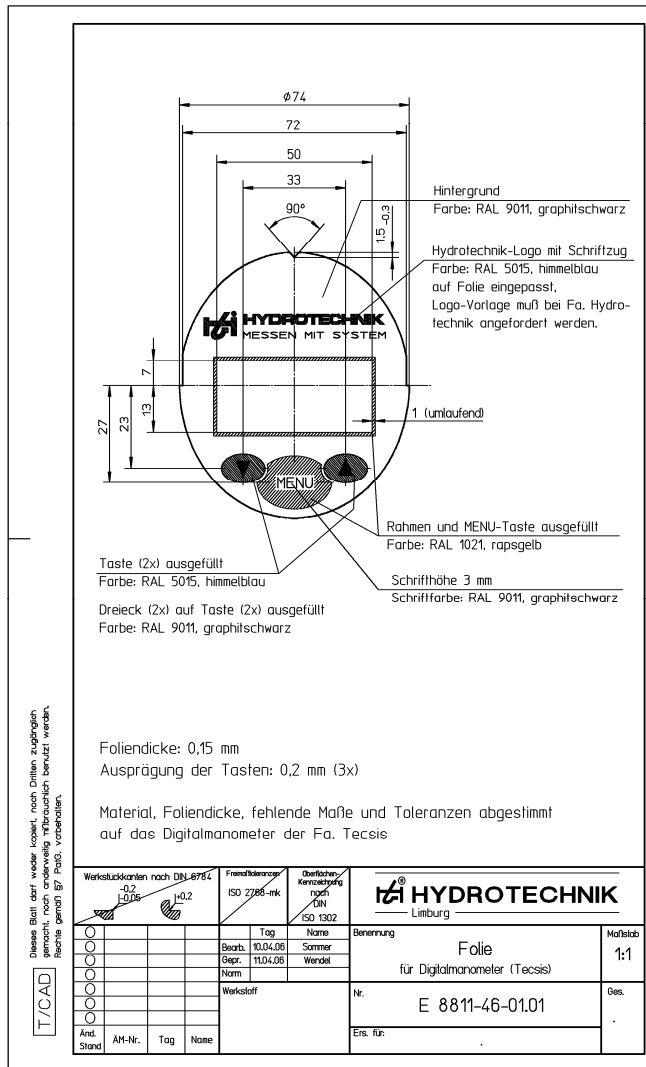
Power supply:
2 x 1.5 V Mignon AA Alkaline battery, 4000 h
(belongs to the delivery)

Storage and operating temperature:
-30°C to +85°C

Ambient temperature:
-10°C to +60°C

Protection type:
IP 65 according EN 60529/IEC 529

Housing:
Stainless steel



MULTI-DPM

HANDLING



Switch device on

Switch device off – press < 1s

Enter programming mode – press >3s



Display maximal value



Display minimal value



+



Reset maximal value



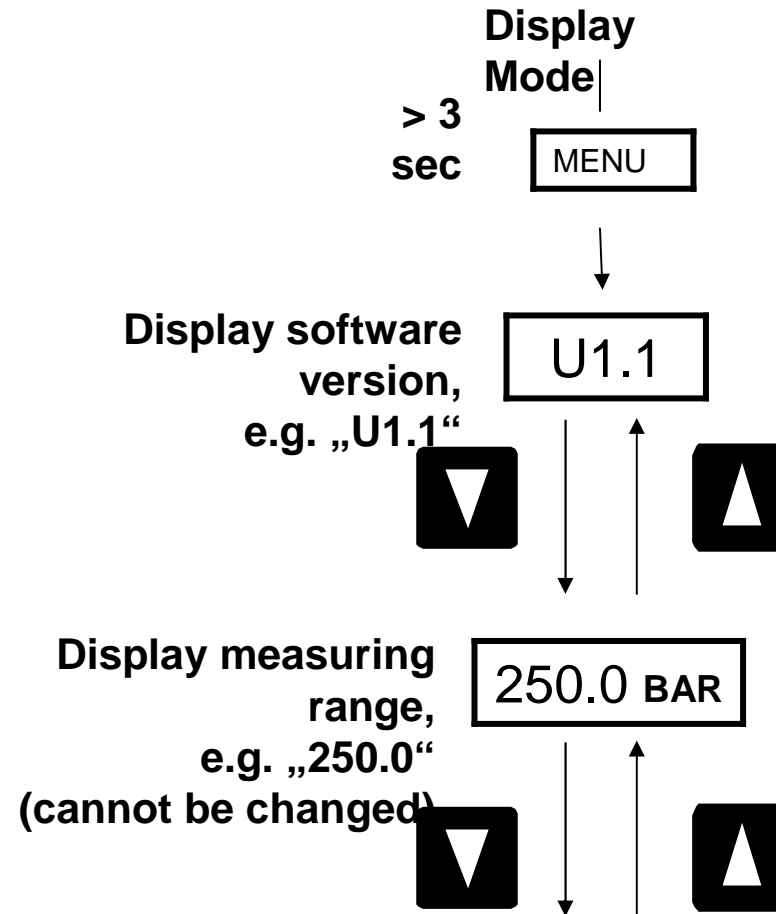
+



Reset minimal value

MULTI-DPM

PROGRAMMING



MULTI-DPM

PROGRAMMING

