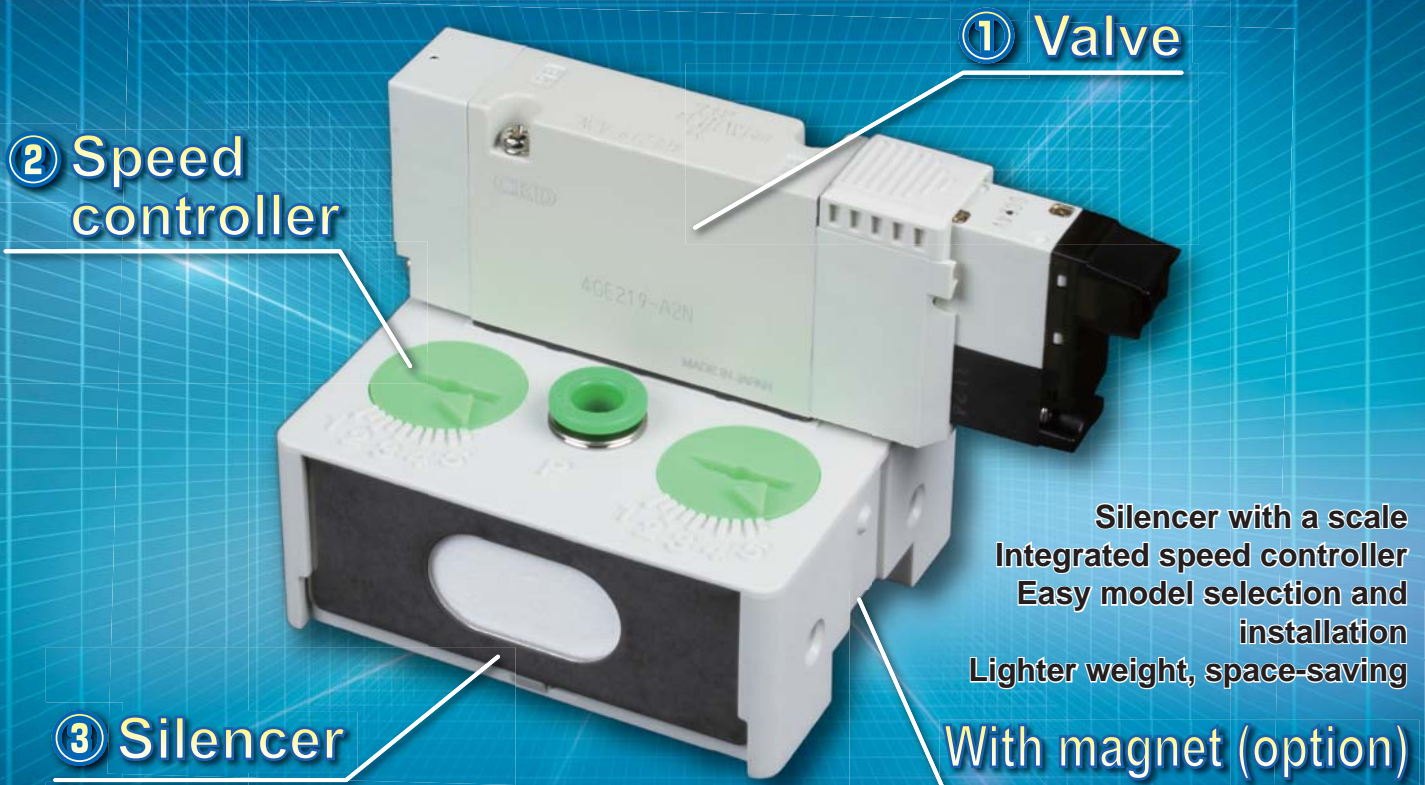


Three functions all together in one unit!!

Set-up free selection and installation

4G unit valve



Reduction of operating speed adjustment man hour

Light weight

- Value control available by an attached scale of 10 stages.



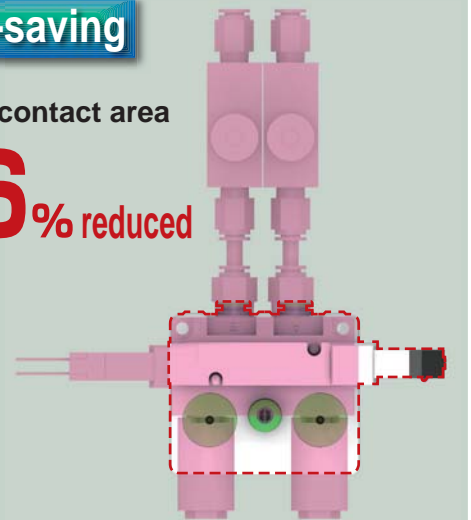
61%
lighter weight

* Adjustment range is 10 stages, latch type

Space-saving

Ground contact area

66% reduced



Reduction of man hour of selection and installation of support component

- Silencer
- Speed controller
- Joint

Selection not required
Purchasing not required
Installation procedure not required

CKD Corporation

<http://www.ckd.co.en/>
CC-1134A-1

● This product is custom order. Contact our sales representatives.

Specifications

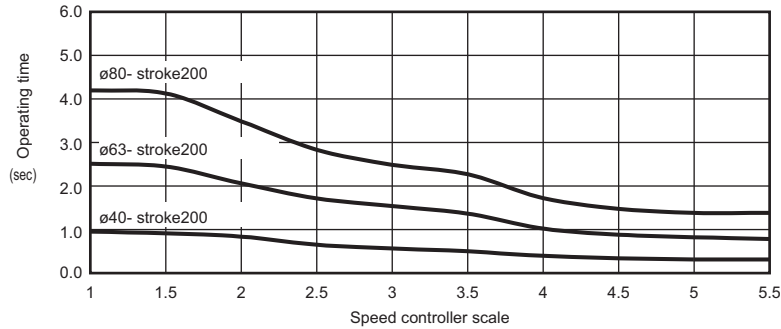
Items	Description	
Type of valve and operation method	Pilot operated soft spool valve	
Using fluid	Compressed air	
Max. working pressure	MPa	0.7
Min. working pressure	MPa	0.2
Resist pressure	MPa	1.05
Ambient temperature	°C	-5~55 (no freezing)
Fluid temperature	°C	5~55
Manual override	Locking/non-locking common type	
Lubrication Note 1	Not required	
Protective structure Note 2	Dust proof	
Resist vibration	m/s ²	50 or less
Resist impact	m/s ²	300 or less
Working environment	Not subject to corrosive gas, etc.	
Mass Note 3	g	180

Note 1: Use the turbine oil Class ISO VG 32 if lubricated. Excessive or intermittent lubrication results in instable operation.

Note 2: Check the water drops or oil, etc., do not come into contact.

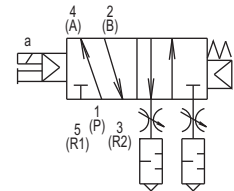
Note 3: It is in case of 4GE2 10-H6-E2-FL*****-3.

Cylinder operating time



Conditions
SCA2, no load,
vertical, piping tube
ø6-1m 0.5MPa

JIS symbol (example: 4GE210)



*: The cylinder operating time is the data from a test in our company. It does not indicate performance-guaranteed range.

How to order

4GE2 1 0 - H6 - E2 - FL*** - 3**

Model no.

Note 1

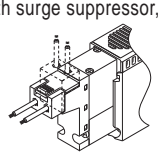
A Solenoid position

B Port size (P, A, B port)

C Electrical connections

D Option

E Voltage

Symbol	Description	
A Solenoid position		
1	2 position single	
2	2 position double	
3	3 position all port closed	
4	3 position A/B/R connection	
5	3 position P/A/B connection	
B Port size (P,A,B port)		
H6	φ6 push-in joint	
H8	φ8 push-in joint	
C Electrical connections		
E shaped connector (axial/ radial)		
E2	Lead wire (300mm)	With surge suppressor, lamp 
E20	Lead wire (500mm)	
E21	Lead wire (1000mm)	
E22	Lead wire (2000mm)	
E23	Lead wire (3000mm)	
D Option		
Blank	Manual override for non lock and lock	
P2	With magnet (temporarily attach for installation)	
E Voltage		
1	100VAC (rectified bridge integrated)	
3	DC24V	
4	DC12V	

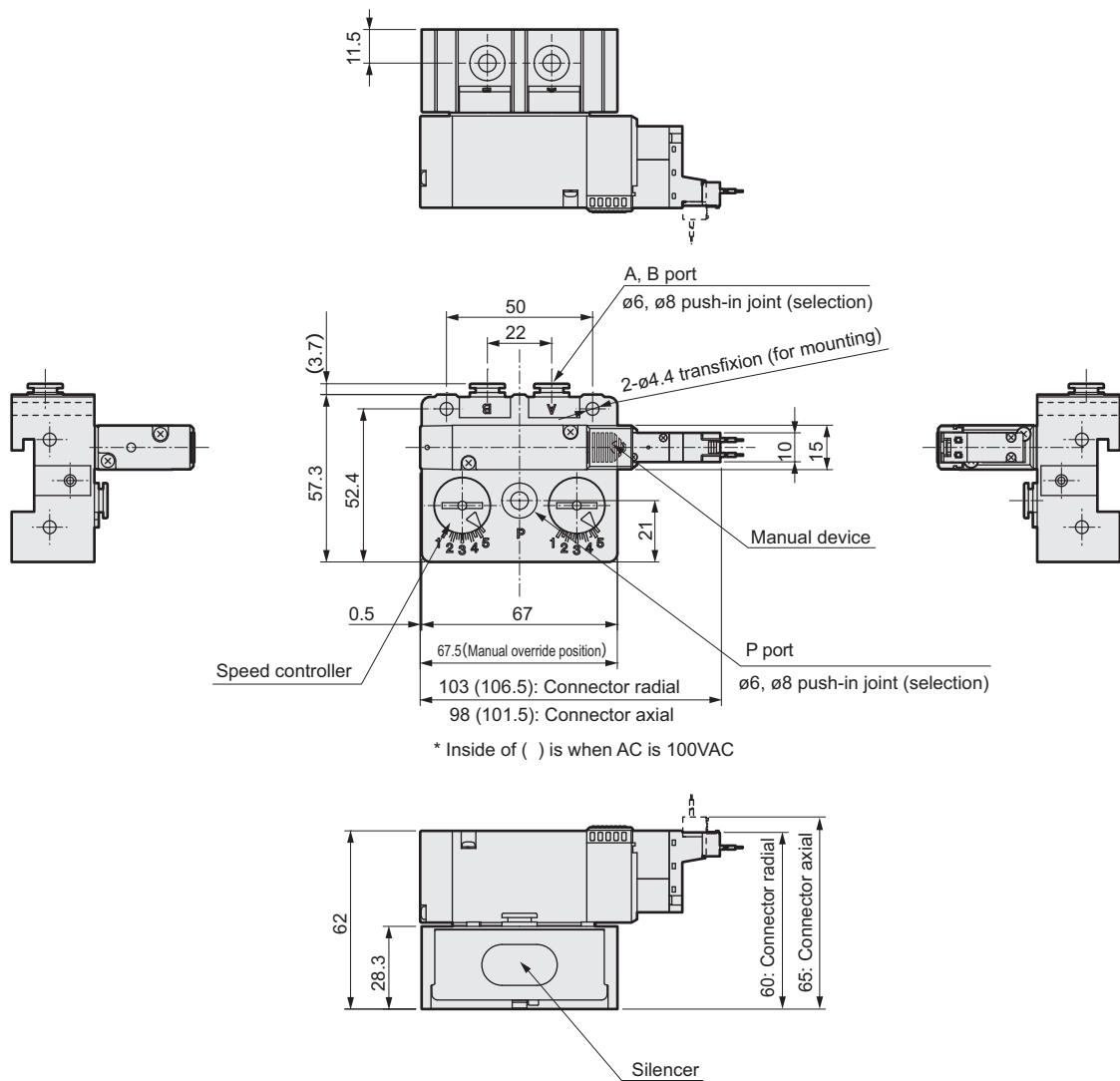
Cautions

Note 1: For "**", a 6 digit number will be input when replying an estimate.

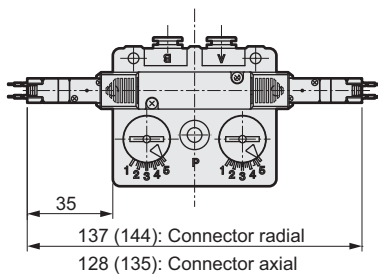
Note 2: Other than E shaped type for electrical connections available. Contact our sales representatives for other specifications and options.

Dimensions

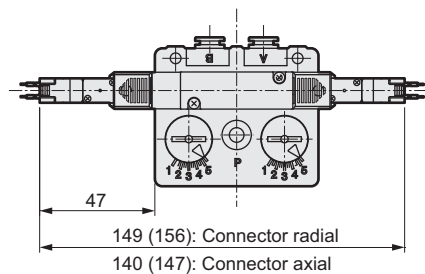
● 2 position single



● 2 position double

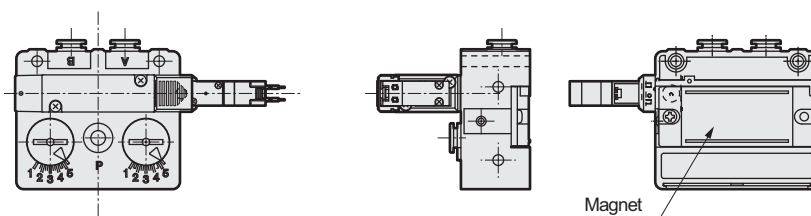


● 3 position



* Inside of () is when AC is 100VAC

● With magnet (option)



*: Temporarily attach for installation

Related products

Compact filter, regulator WB500 series

- Compact
Push-in joint and installed bracket as a unit.
Reduction of total space.
- Light weight
Adoption of resin for body material.
- Workability improved
Push-in joint as standard. For piping direction,
straight and elbow type are prepared to pipe easily.

Catalog No. CB-024SA



Compact regulator RB500 series

- Compactness considering piping space
- Corrosion resistance improved by resinify
- Workability improved
Push-in joint as standard. For piping direction,
straight and elbow type are prepared to pipe easily.

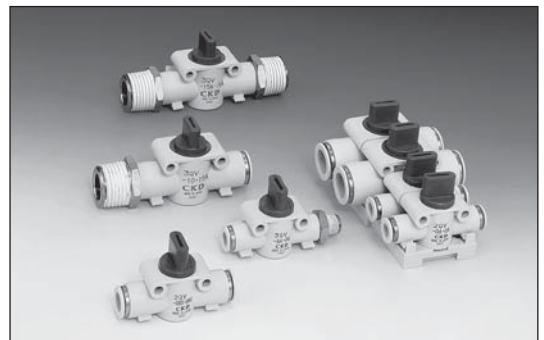
Catalog No. CB-024SA



Quick valve 2QV, 3QV series

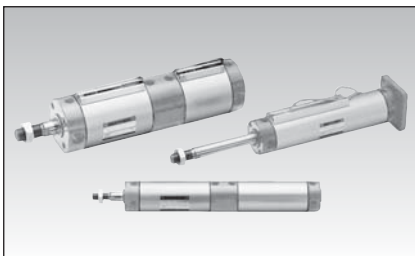
Straight flow path for wide effective cross-section area
Flame resistant resin as standard. (equivalent to UL94
standard V-O)
Option bracket makes manifold available
2 port valve, 3 port valve line-up

Catalog No. CB-024SA



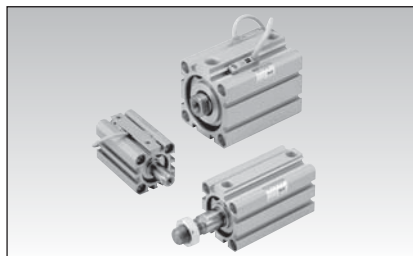
Super micro cylinder SCM series

Catalog No. CB-029SA



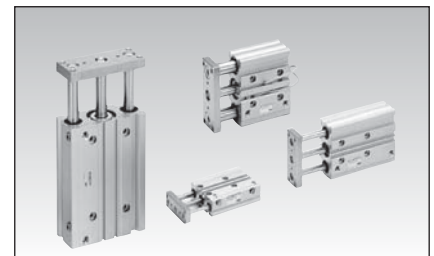
Super compact cylinder SSC2 series

Catalog No. CB-029A



Cylinder with guide STG series

Catalog No. CB-029SA



The goods and their replicas, or the technology and software in this catalog are subject to complementary export regulations by Foreign Exchange and Foreign Trade Law of Japan.
If the goods and their replicas, or the technology and software in this catalog are to be exported, laws require the exporter to make sure they will never be used for the development or the manufacture of weapons for mass destruction.